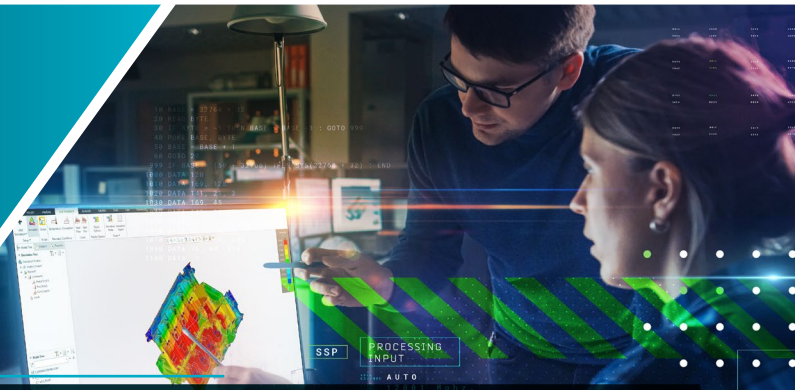




# TOP ENHANCEMENTS CREO 7.0

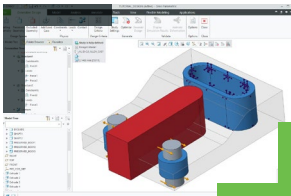


The future of how you design starts with Creo 7.0 and a simple product strategy: Make your job easier and help you get better products to market faster. As you expect from the market leader, each Creo release also brings productivity enhancements and UI improvements. And Creo 7.0 introduces exciting new capabilities in the areas of Generative Design, Simulation-Driven Design, Additive Manufacturing, and Multibody. One design environment and unmatched capabilities bringing you that much closer to your best work.

[REQUEST A DEMO >>](#)

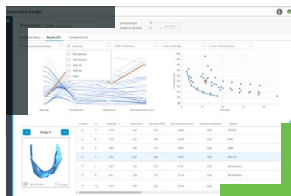
## GENERATIVE DESIGN

### »»» Generative Topology Optimization (GTO) >



Don't settle. GTO creates optimized product designs based on your constraints and requirements—including materials and manufacturing processes. Rapidly explore innovative design options to reduce development time and expense, all within the Creo design environment. AI-driven GTO helps you to deliver high-quality, lower-cost, manufacturable designs.

### »»» Creo Generative Design Extension (GDX)\* >

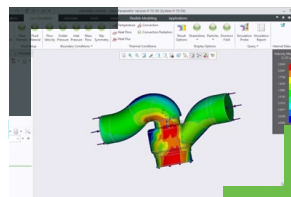


Leverage the power of the cloud to run multiple optimization studies in parallel, dramatically improving your productivity. The benefit? You can quickly evaluate and compare more design concepts, increasing your confidence in the final chosen design, before bringing it back to Creo for further downstream use.

## SIMULATION-DRIVEN DESIGN

Add the power of simulation, in tools for design engineers, to your workflow. Simulation gives you the ability to analyze and validate the performance of your 3D virtual prototypes before you produce the first part. Creo Simulation Live guides you in real-time as you design, while Creo ANSYS Simulation is a high-fidelity tool that provides validation.

### »»» Creo Simulation Live >

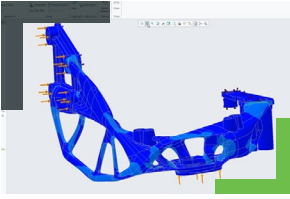


Creo Simulation Live now gives you real-time, instantaneous fluid flow simulation as well as parameter studies, plotting/graphing, transient thermal studies, and the ability to isolate components.

No windows or waiting. The software runs in the background giving you instantaneous dynamic feedback in your Creo modeling environment.

That's not just convenience and speed, that's design guidance as a normal part of your workflow.

## Creo ANSYS Simulation\* >

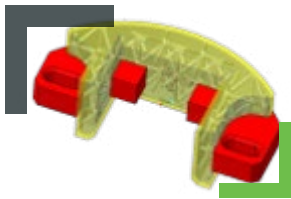


Move from receiving directional guidance to a richer set of capabilities that produce a higher-fidelity validation of your design. With Creo ANSYS Simulation, you now have access to the proven ANSYS solvers directly inside Creo, allowing you to perform structural, modal, and thermal analysis with ease.



## MULTIBODY DESIGN

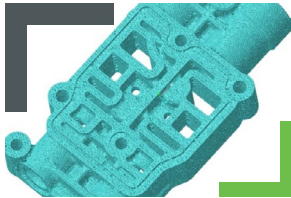
### Multibody Design >



Multibody design significantly improves design effectiveness for users when building complex geometry by allowing you to freely and efficiently work with disjointed, touching, or overlapping geometry within a single part. As well as significantly improving overall design efficiency, it is also critical in areas such as generative design, additive manufacturing, and designing multi-material overmolds for injection molded parts.

## ADDITIVE MANUFACTURING/CAM

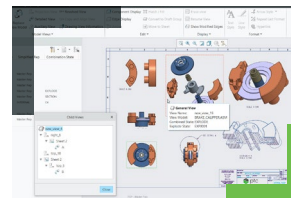
### Additive Manufacturing/CAM >



Creo offers the most comprehensive suite of additive manufacturing capabilities in the market today. Creo 7.0 continues the innovation by enhancing support for Stochastic Lattices, enabling them to identify and follow the edges of prismatic shapes. From a traditional machining point of view, we've enabled support for Swiss turning machines, so you can select Swiss turning in Mill Turn Work Center, instead of manually adding custom commands.

## PRODUCTIVITY ENHANCEMENTS

### Creo continues to make you more productive and your daily work easier. >



- Apply draft to already drafted parts.
- Multiple UI improvements to the Sketcher tool
- Inside Sketcher, selected 2D entities can be mirrored about any linear sketch entity without requiring centerline creation.
- Improvements to drawing tree
- Continued expansion of Detailing and MBD standards compliance



Creo is a 3D CAD solution that helps you build better products faster by accelerating product innovation, reusing the best of your design and replacing assumptions with facts. Go from the earliest phases of product design to a smart, connected product with Creo. And with cloud-based augmented reality in each seat of Creo, you can collaborate with anyone, instantly at any step in the product development process. In the fast-changing world of the Industrial IoT, no other company can get you to substantial value as quickly and effectively as PTC

\*Available in Creo 7.0.2.0

© 2020, PTC Inc. (PTC). All rights reserved. Information described herein is furnished for informational use only, is subject to change without notice, and should not be taken as a guarantee, commitment, or offer by PTC. PTC, the PTC logo, and all PTC product names and logos are trademarks or registered trademarks of PTC and/or its subsidiaries in the United States and other countries. All other product or company names are property of their respective owners. The timing of any product release, including any features or functionality, is subject to change at PTC's discretion. [J14429-CREO TOP ENHANCEMENTS 7.0-0320](#)